

BERARD

SINCE
1945



www.berardtrans.com



In This Issue:

- > The Big One | 3000 Ton Liftboat Loadout
- > A Day in the Plant | The Exchanger Project
- > Employee Spotlight | Mark Pelous

> The Big One | 3000 Ton Liftboat Loadout

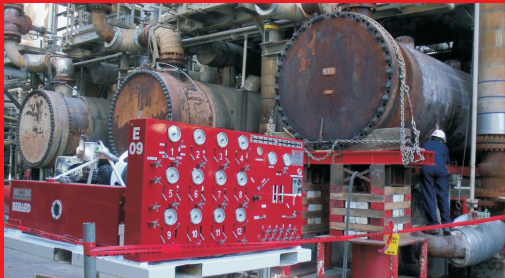


Feast your eyes on the largest pipe leg liftboat in the world. Once completed, the 320 class vessel will feature (2) 300 ton cranes mounted on the front legs as well as a heli deck at the stern. Measuring 200' x 133', the 3000 ton vessel was transported on 92 axle lines of spmt's (32 ESE, 60 SLE) from it's fabrication area to the bulkhead for loadout. The move consisted of poor ground conditions and fitting the load between the water's edge and the clients shop with a mere 10" of clearance. Once in position at the bulkhead, the vessel was then loaded onto a 260' x 72' deckbarge where the vessel lowered it's legs and lifted itself up and off of the transporters. The deck barge was removed and the vessel lowered itself to the water.





When it was time for a New Orleans refinery to maintain their 240,000 pound heat exchanger, Berard was called in to remove the exchanger from its crowded operating location to a cleaning area. Berard utilized a unified jacking system to lift the exchanger from its original supports. A 300 ton sliding system was positioned beneath the saddles, and the jacks were removed. Berard crews extended the slide track into the neighboring alleyway. Two six axle Goldhofer PST-SLE units were situated so that the slide track would move the exchanger directly atop the transporters. In a matter of hours, the exchanger was slid from its operating location onto the transporters, and transported out of the operating unit. The Berard team completed the project according to plan with zero safety incidents; another testament to the dedication to planning and safety for the Berard team.





> Employee Spotlight | Mark Pelous

Mark Pelous | Safety Coordinator / Foreman

When it comes to keeping everyone safe at Berard, Mark is the man. Wearing the hats of both safety coordinator and shop foreman, he brings several years of offshore construction related experience to the Berard Team. Joining us in January of 2008, Mark has been a valuable asset to the company ever since.

Besides looking a little like Richard Gere and being the safety man, Mark is one heck of a fitter / welder and fabricates much of the custom equipment used in the day to day operations of Berard.

In his off time Mark likes to hunt, fish and is an avid Saints fan. He's married to Dawn and they have one son Jesse.

